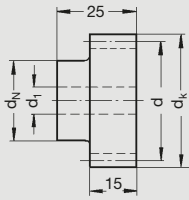





gerade verzahnt, Verzahnung gefräst, 20° Eingriffswinkel
Straight tooth system, milled teeth, 20° transverse pressure angle



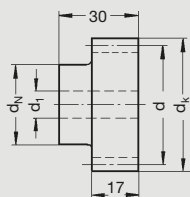
weich / soft
Kunststoff POM Plastic POM
Verz.-Qual. Gearing grade
9 bc 26

Bestell-Nummer Order code	Zähnezahl N° of teeth z	d	d _k	d ₁	d _N	 g
22 10 012	12	12,0	14,0	6	9	2,0
22 10 013	13	13,0	15,0	6	9	2,5
22 10 014	14	14,0	16,0	6	11	3,0
22 10 015	15	15,0	17,0	6	12	4,0
22 10 016	16	16,0	18,0	6	12	4,5
22 10 017	17	17,0	19,0	6	14	5,0
22 10 018	18	18,0	20,0	6	15	6,0
22 10 019	19	19,0	21,0	6	15	8,0
22 10 020	20	20,0	22,0	6	16	10,0
22 10 021	21	21,0	23,0	6	16	12,0
22 10 022	22	22,0	24,0	6	18	14,0
22 10 023	23	23,0	25,0	6	18	15,0
22 10 024	24	24,0	26,0	9	20	17,0
22 10 025	25	25,0	27,0	9	20	20,0
22 10 030	30	30,0	32,0	9	20	25,0
22 10 035	35	35,0	37,0	9	25	28,0
22 10 038	38	38,0	40,0	9	25	32,0
22 10 040	40	40,0	42,0	9	25	35,0
22 10 045	45	45,0	47,0	9	30	45,0
22 10 048	48	48,0	50,0	9	30	48,0
22 10 050	50	50,0	52,0	9	30	50,0
22 10 057	57	57,0	59,0	9	40	68,0
22 10 060	60	60,0	62,0	9	40	75,0


Eine Weiterbearbeitung (Bohrung ausdrehen, nuten, Gewinde anbringen etc.) ist kurzfristig möglich.
Further finishing (turning bores, keywaying, threading, etc.) is possible within short time.



gerade verzahnt, Verzahnung gefräst, 20° Eingriffswinkel
Straight tooth system, milled teeth, 20° transverse pressure angle



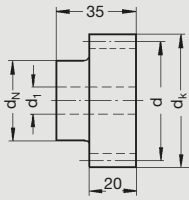
weich / soft
Kunststoff POM Plastic POM
Verz.-Qual. Gearing grade
9 bc 26

Bestell-Nummer Order code	Zähnezahl N° of teeth z	d	d _k	d ₁	d _N	 9
22 15 012	12	18,0	21,0	6	14	5,5
22 15 013	13	19,5	22,5	6	14	5,5
22 15 014	14	21,0	24,0	6	16	7,0
22 15 015	15	22,5	25,5	6	18	9,0
22 15 016	16	24,0	27,0	6	18	12,5
22 15 017	17	25,5	28,5	9	20	14,5
22 15 018	18	27,0	30,0	9	20	16,0
22 15 019	19	28,5	31,5	9	20	18,0
22 15 020	20	30,0	33,0	9	25	23,5
22 15 021	21	31,5	34,5	9	25	25,5
22 15 022	22	33,0	36,0	9	25	27,0
22 15 023	23	34,5	37,5	9	25	29,0
22 15 024	24	36,0	39,0	9	25	31,0
22 15 025	25	37,5	40,5	9	25	32,5
22 15 030	30	45,0	48,0	9	30	42,0
22 15 035	35	52,5	55,5	9	40	49,0
22 15 038	38	57,0	60,0	9	40	73,0
22 15 040	40	60,0	63,0	9	40	83,5
22 15 045	45	67,5	70,5	12	50	111,0
22 15 048	48	72,0	75,0	12	50	127,0
22 15 050	50	75,0	78,0	12	50	136,0
22 15 057	57	85,5	88,5	12	60	182,0
22 15 060	60	90,0	93,0	12	60	211,0


Eine Weiterbearbeitung (Bohrung ausdrehen, nuten, Gewinde anbringen etc.) ist kurzfristig möglich.
Further finishing (turning bores, keywaying, threading, etc.) is possible within short time.



gerade verzahnt, Verzahnung gefräst, 20° Eingriffswinkel
Straight tooth system, milled teeth, 20° transverse pressure angle

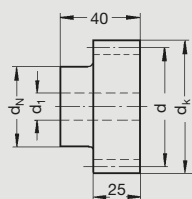



weich / soft
Kunststoff POM Plastic POM
Verz.-Qual. Gearing grade
9 bc 26

Bestell-Nummer Order code	Zähnezahl N° of teeth z	d	dk	d1	dN	 9
22 20 012	12	24,0	28,0	9	18,0	15
22 20 013	13	26,0	30,0	9	19,0	18
22 20 014	14	28,0	32,0	9	19,0	20
22 20 015	15	30,0	34,0	9	24,5	21
22 20 016	16	32,0	36,0	9	25,0	23
22 20 017	17	34,0	38,0	9	25,0	32
22 20 018	18	36,0	40,0	9	25,0	36
22 20 019	19	38,0	42,0	9	25,0	39
22 20 020	20	40,0	44,0	9	30,0	47
22 20 021	21	42,0	46,0	9	30,0	51
22 20 022	22	44,0	48,0	9	30,0	55
22 20 023	23	46,0	50,0	9	30,0	59
22 20 024	24	48,0	52,0	12	35,0	65
22 20 025	25	50,0	54,0	12	35,0	70
22 20 030	30	60,0	64,0	12	40,0	105



Eine Weiterbearbeitung (Bohrung ausdrehen, nuten, Gewinde anbringen etc.) ist kurzfristig möglich.
Further finishing (turning bores, keywaying, threading, etc.) is possible within short time.

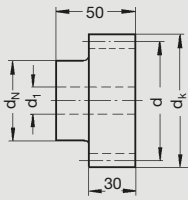
**gerade verzahnt**, Verzahnung gefräst, 20° Eingriffswinkel
Straight tooth system, milled teeth, 20° transverse pressure angle**weich / soft**Kunststoff POM
Plastic POMVerz.-Qual.
Gearing grade**9 bc 26**

Bestell-Nummer Order code	Zähnezahl N° of teeth z	d	d _k	d ₁	d _N	
22 25 012	12	30,0	35,0	9	20,0	29
22 25 013	13	32,5	37,5	9	20,0	32
22 25 014	14	35,0	40,0	9	25,0	40
22 25 015	15	37,5	42,5	9	25,0	45
22 25 016	16	40,0	45,0	9	30,0	56
22 25 017	17	42,5	47,5	9	30,0	63
22 25 018	18	45,0	50,0	9	35,0	74
22 25 019	19	47,5	52,5	12	35,0	78
22 25 020	20	50,0	55,0	12	35,0	85
22 25 021	21	52,5	57,5	12	35,0	90
22 25 022	22	55,0	60,0	12	40,0	96
22 25 023	23	57,5	62,5	12	40,0	112
22 25 024	24	60,0	65,0	12	40,0	120
22 25 025	25	62,5	67,5	12	45,0	136
22 25 030	30	75,0	80,0	12	50,0	176


Eine Weiterbearbeitung (Bohrung ausdrehen, nuten, Gewinde anbringen etc.) ist kurzfristig möglich.
Further finishing (turning bores, keywaying, threading, etc.) is possible within short time.



gerade verzahnt, Verzahnung gefräst, 20° Eingriffswinkel
Straight tooth system, milled teeth, 20° transverse pressure angle



weich / soft
Kunststoff POM Plastic POM
Verz.-Qual. Gearing grade
9 bc 26

Bestell-Nummer Order code	Zähnezahl N° of teeth z	d	d _k	d _i	d _N	 9
22 30 012	12	36	42	14	25	45
22 30 013	13	39	45	14	25	54
22 30 014	14	42	48	14	25	61
22 30 015	15	45	51	14	35	74
22 30 016	16	48	54	14	35	92
22 30 017	17	51	57	14	42	121
22 30 018	18	54	60	14	45	127
22 30 019	19	57	63	14	45	136
22 30 020	20	60	66	14	45	149
22 30 021	21	63	69	14	45	161
22 30 022	22	66	72	14	50	190
22 30 023	23	69	75	14	50	200
22 30 024	24	72	78	14	50	218
22 30 025	25	75	81	14	60	245

Eine Weiterbearbeitung (Bohrung ausdrehen, nuten, Gewinde anbringen etc.) ist kurzfristig möglich.
Further finishing (turning bores, keywaying, threading, etc.) is possible within short time.

